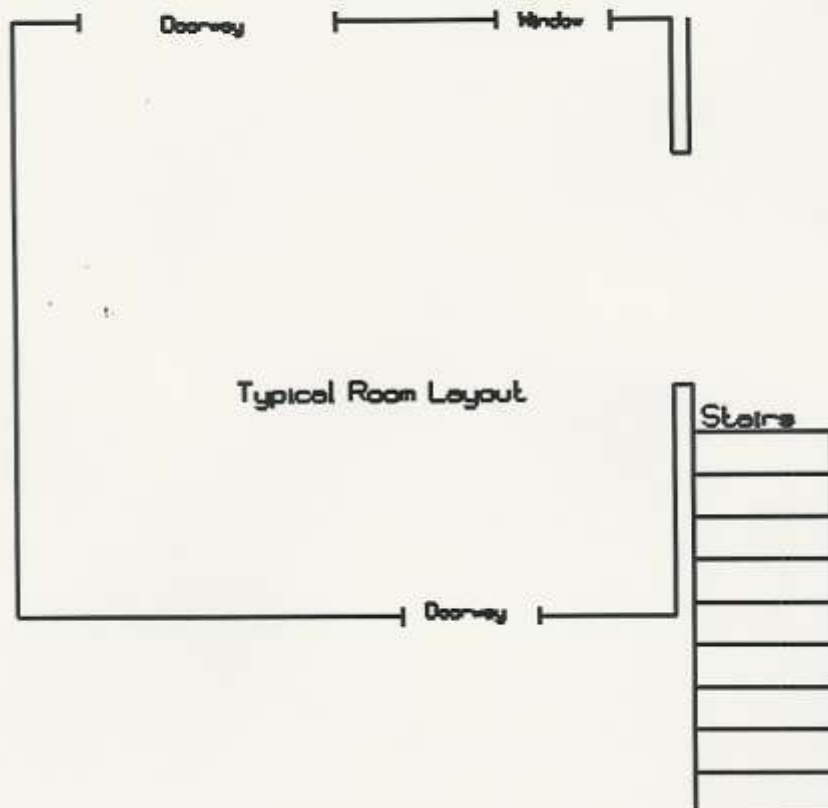
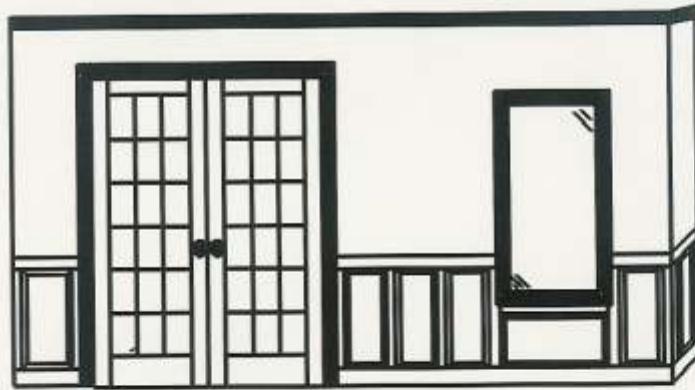
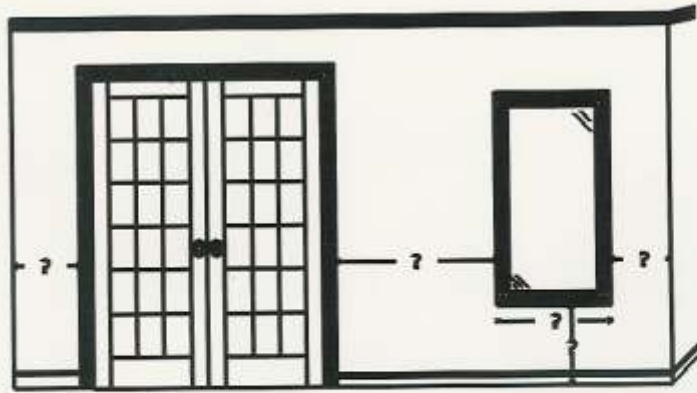
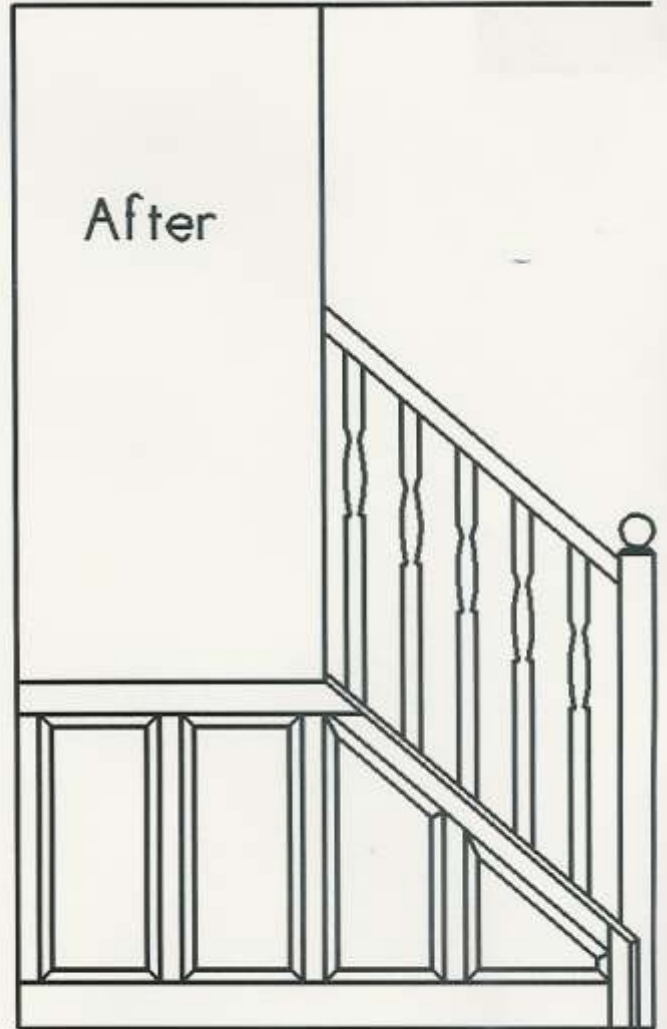
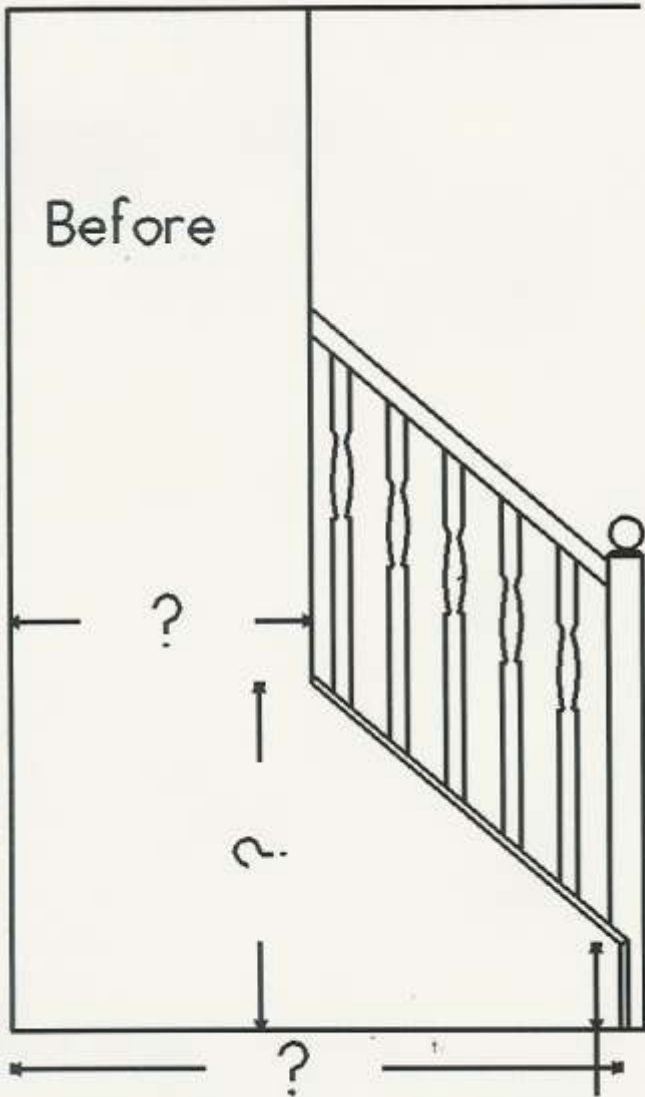


Give us the basic layout of your room with any unique situations, such as doors or windows, and provide us with any measurements that may be required.



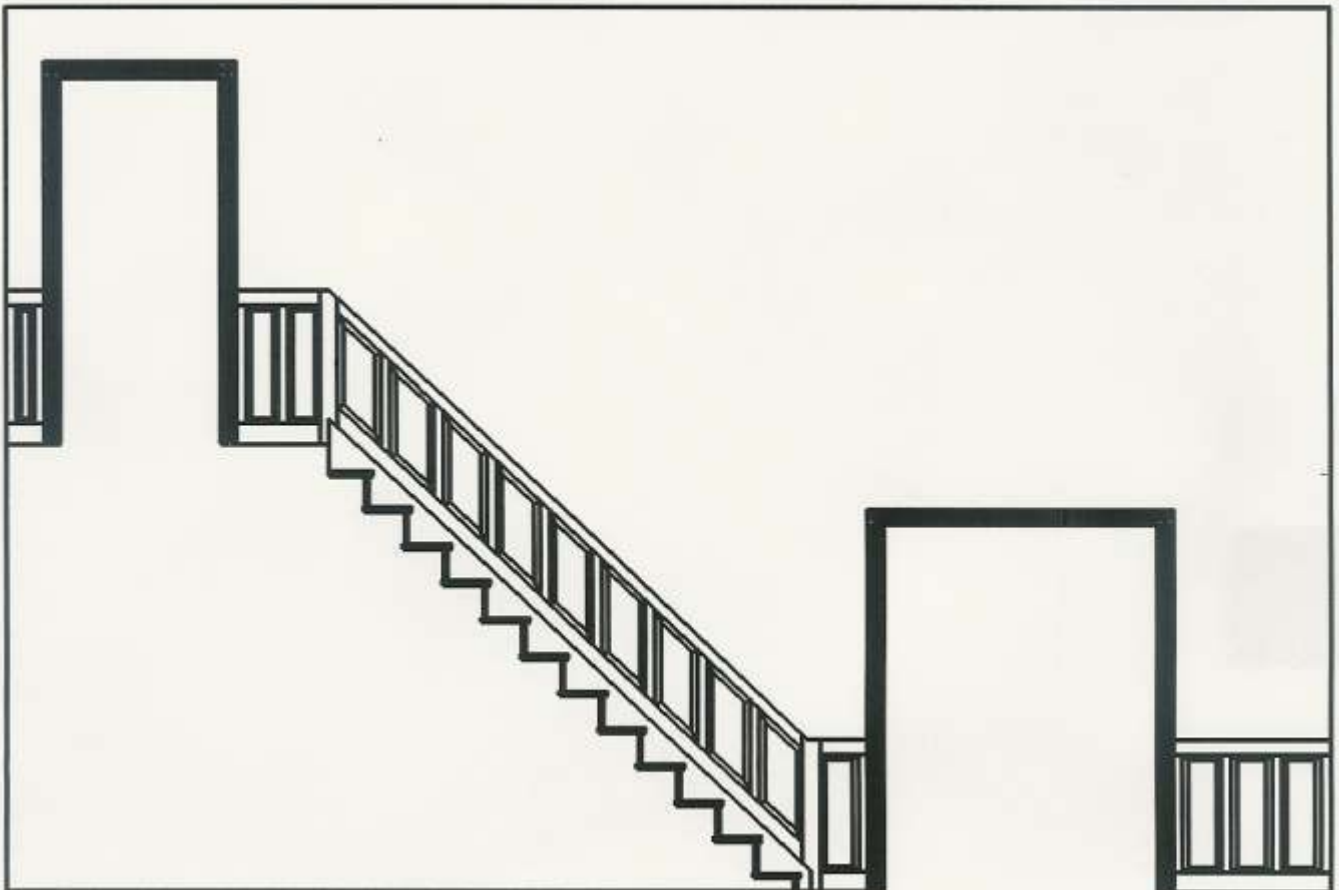
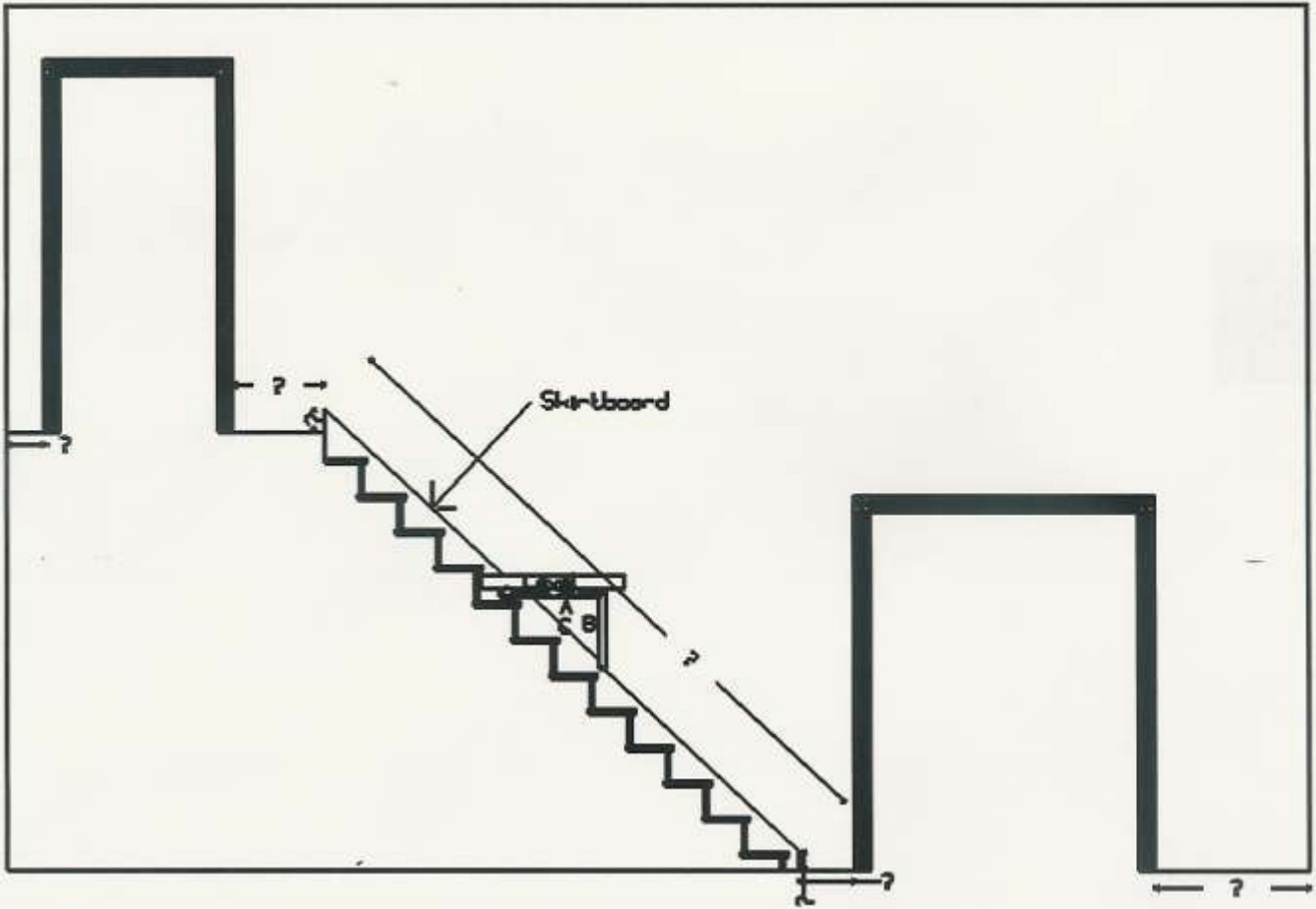
Under the stair wainscoting.

Sketch on paper your basic situation with any measurements that pertain to the wainscoted area.

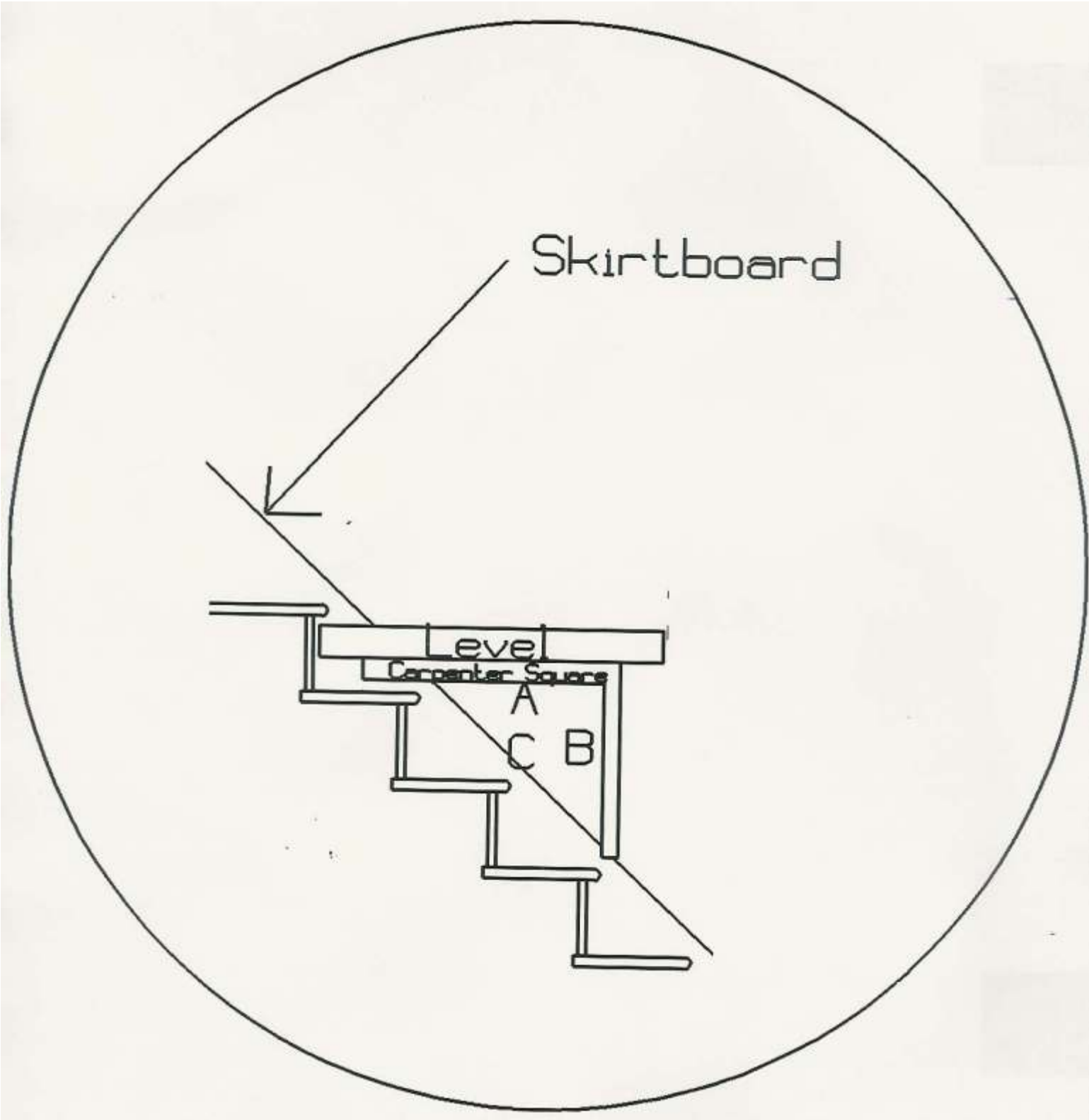


Up the stairs wainscoting.

Sketch on paper your basic situation



Give us the angle of your staircase.



Place a carpenters square on one of the treads as shown. Draw on paper the triangle showing the wall above the stringer & write down the corresponding measurements for "A", "B" and "C".