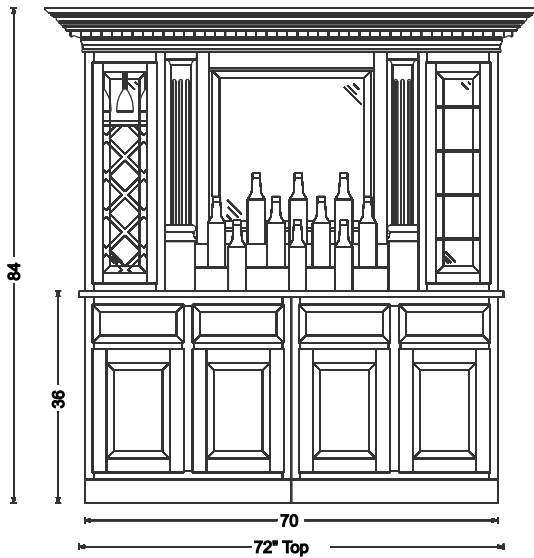
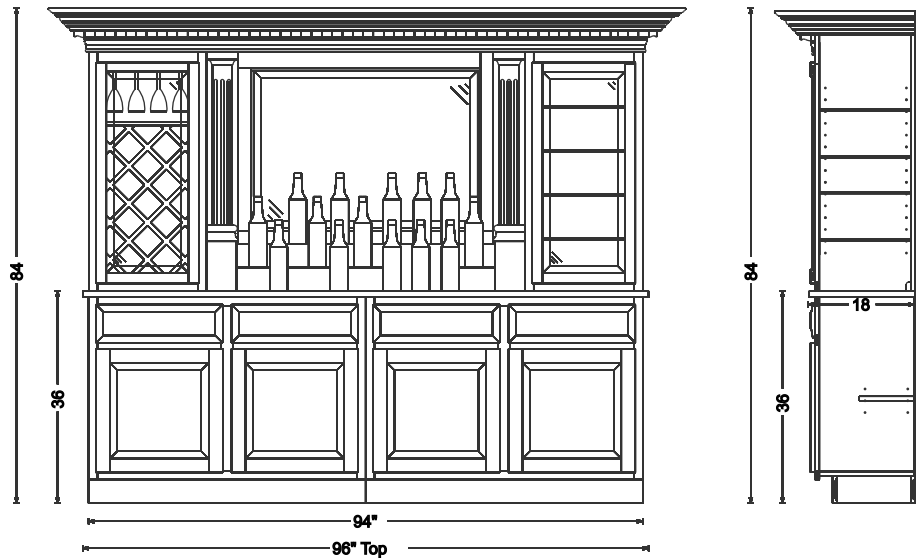


**Z-10 Back Bar**



**Z-10 Back Bar**

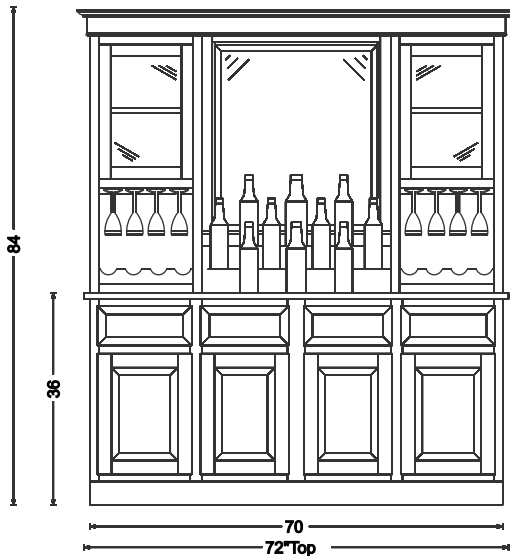


Base cabinets feature 4-drawers, 4-doors, 1-adj. shelf per cabinet, and a solid 1-1/16" wood countertop. Top section features a wine cabinet that holds up to 10 bottles and stemware holders for glasses, 1/4" clear bevelled glass door. Second cabinet has four 1/4" thick glass adjustable shelves and also a bevelled glass door. Two solid wood fluted columns and two half columns behind, 2-tier bottle step, and a bevelled mirror. Top half is put together as one piece from the countertop up. Bottom half will be broken apart as two separate base cabinets.

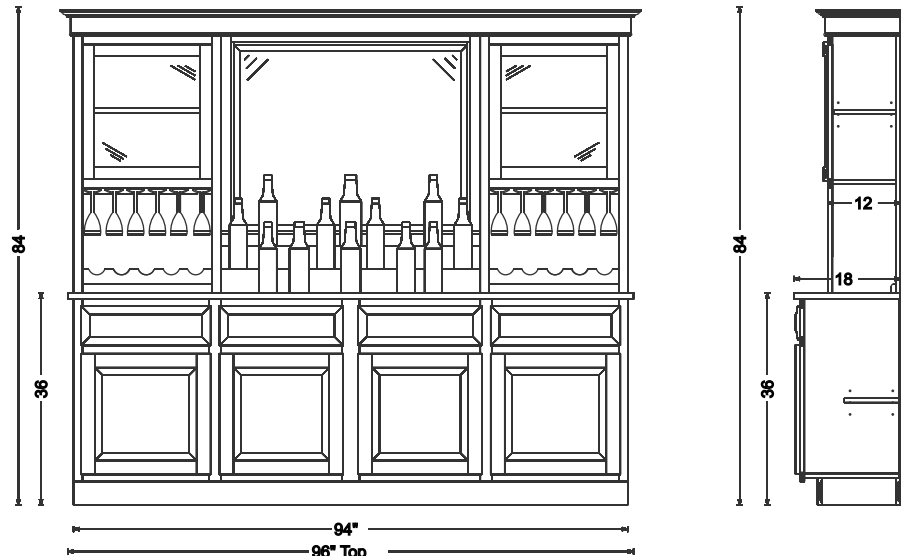
This 96" back bar has the same features as the 72" back bar. We have added 6" to each of the top cabinets, and 12" to the mirror and bottle step. The wine bottle cabinet now holds 17 wine bottles and has four rows of stemware holders for glasses. 12" has been added to each of the base cabinets. This gives more storage space and more drawer space.

**The Wood Works 1111 N. Black Horse Pike Williamstown, NJ 08094 856-728-4520**

**Z-6 Back Bar**



**Z-6 Back Bar**

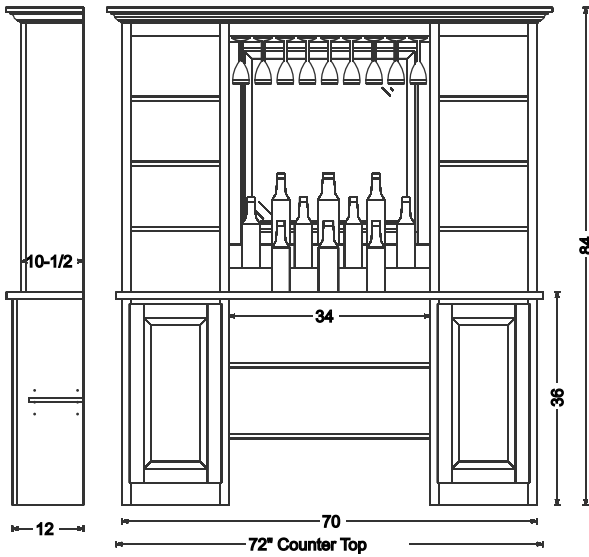


Base cabinets feature 4-drawers, 4-doors, 1-adj. shelf per cabinet, and a solid 1-1/16" wood countertop. Top section features a 2 tier bottle step, bevelled mirror, stemware holders for wine glasses, 2 wine bottle shelves, 2 doors with 1/4" clear flat glass and an adjustable wood shelf behind each. Top half is put together as one piece from the countertop up. Bottom half will be broken apart as two separate base cabinets.

This 96" back bar has the same features as the 72" back bar. We have added 6" to each of the top cabinets, and 12" to the mirror and bottle steps. Now there is two more rows of stemware in each cabinet for glasses and more space to display your favorite bottles. 12" has been added to each of the base cabinets. This gives more storage space and more drawer space.

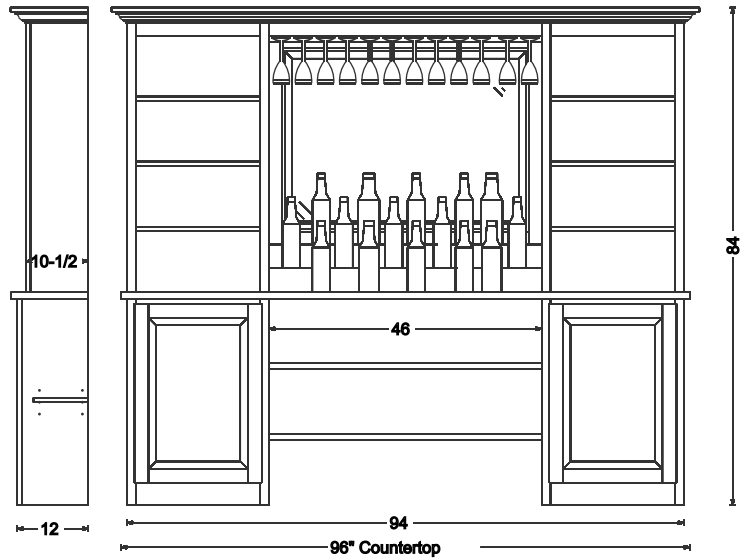
## Economical Back Bars

Z-3 Back Bar



This economical back bar is very popular. Simple and also elegant.  
Two base cabinets (each with 1 adjustable shelf) with 2 adjustable shelves in between. A 3/4" quality wood veneered plywood countertop with a 1-1/4" solid wood drop edge. Two top cabinets with 3 wood adjustable shelves in each. A 2 tier bottle step, bevelled mirror, and stemware holders for glasses.

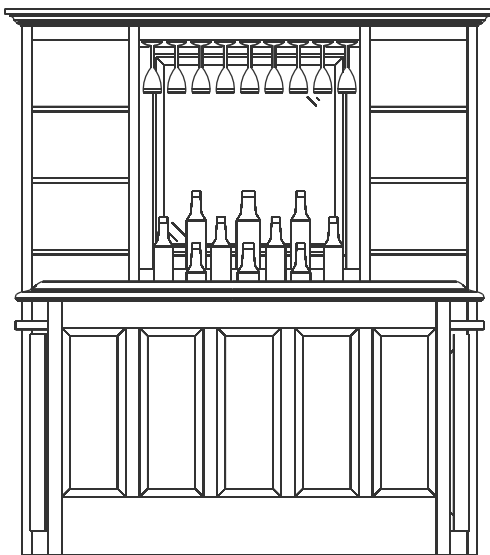
Z-3 Back Bar



This 96" back bar has the same features as the 72" back bar. We have added 6" to each of the top & bott. cabinets, and 12" to the mirror and bottle steps. Now there are three more rows of stemware for glasses and more space to display your favorite bottles. 6" has been added to each of the base cabinets. This gives more storage space and more drawer space. The two middle adjustable shelves have been changed to 1-1/16" solid wood for extra strength.

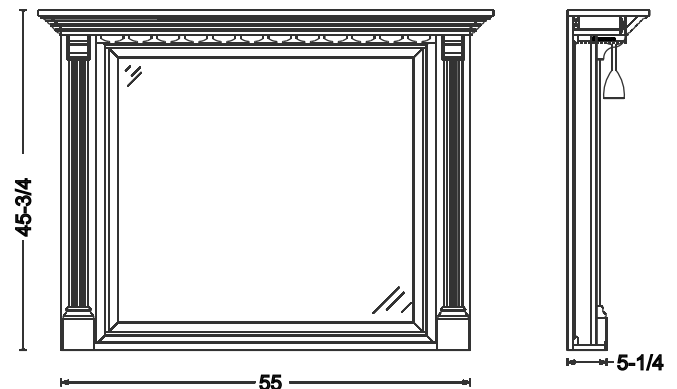
The Wood Works 1111 N. Black Horse Pike Williamstown NJ 08094 856-728-4520

Z-3 Back Bar with 6' Bar Unit



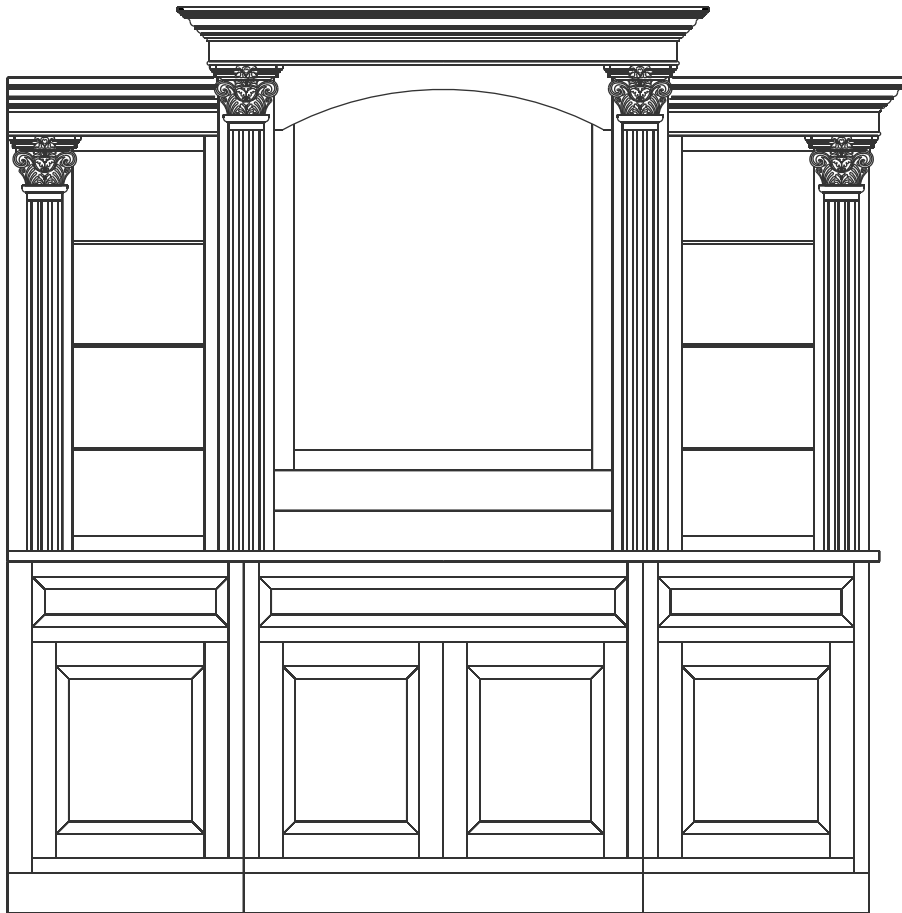
A popular combination of the economical back bar and a 6' Free - Standing bar unit. This can usually be placed in any room of the house.

101 Backbar



This backbar is designed for small spaces. It can be hung on the wall or can be set on a wall bar to give you the look of a bigger backbar, but with less space used. Backbar features stemware holders for glasses, beveled mirror, and a bottle shelf.

# ST3 Back Bar



Base cabinets feature 3-drawers, 4-doors, 1-adj. shelf per cabinet, and a solid 1-1/16" wood countertop  
Top section features a 2 tier bottle step, Beveled mirror, six 1/4" thick glass adjustable shalves, fluted trim and a radius top rail in center cabinet  
Top half is put together as one piece from the countertop up. Bottom half will be broken apart into three seperate base cabinets.

**The Wood Works**

**1111 N. Black Horse Pike Williamstown, NJ 08094**

**856-728-4520**